

# HSD

**Straight Side  
High Speed Double Crank  
Presses**

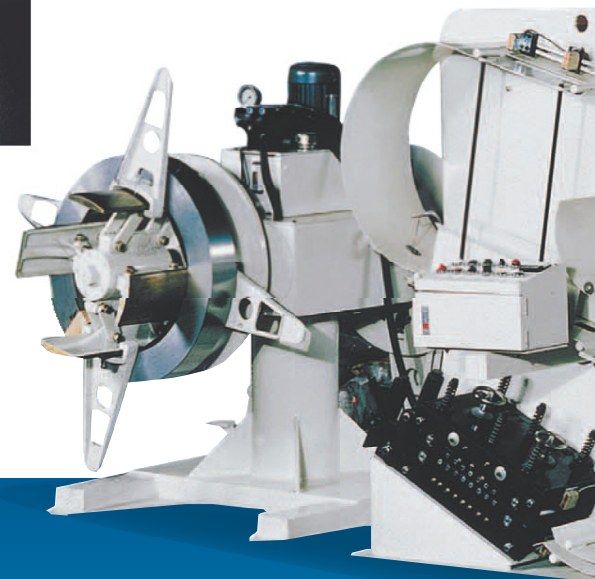
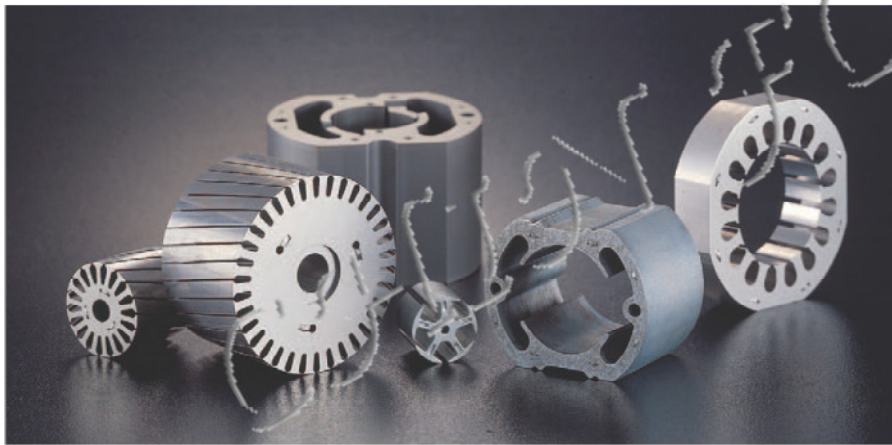
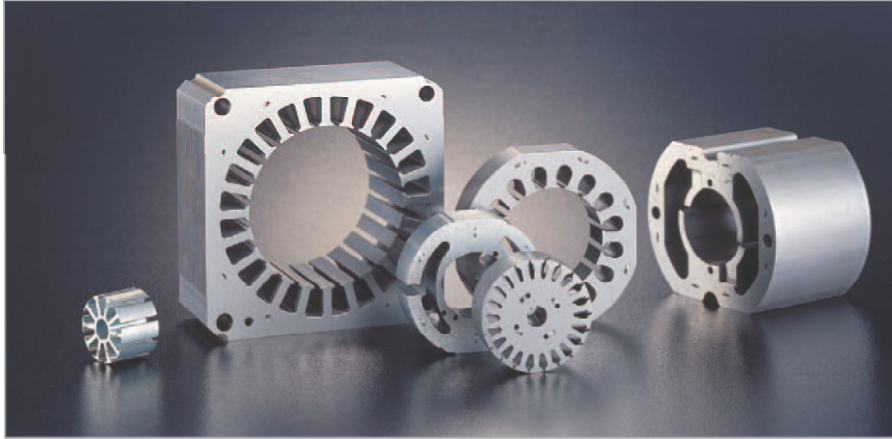
閉式雙點高速沖床

60. 80.125. 200. 300. ton



# HSD Straight Side High Speed

## 閉式雙點高速沖床



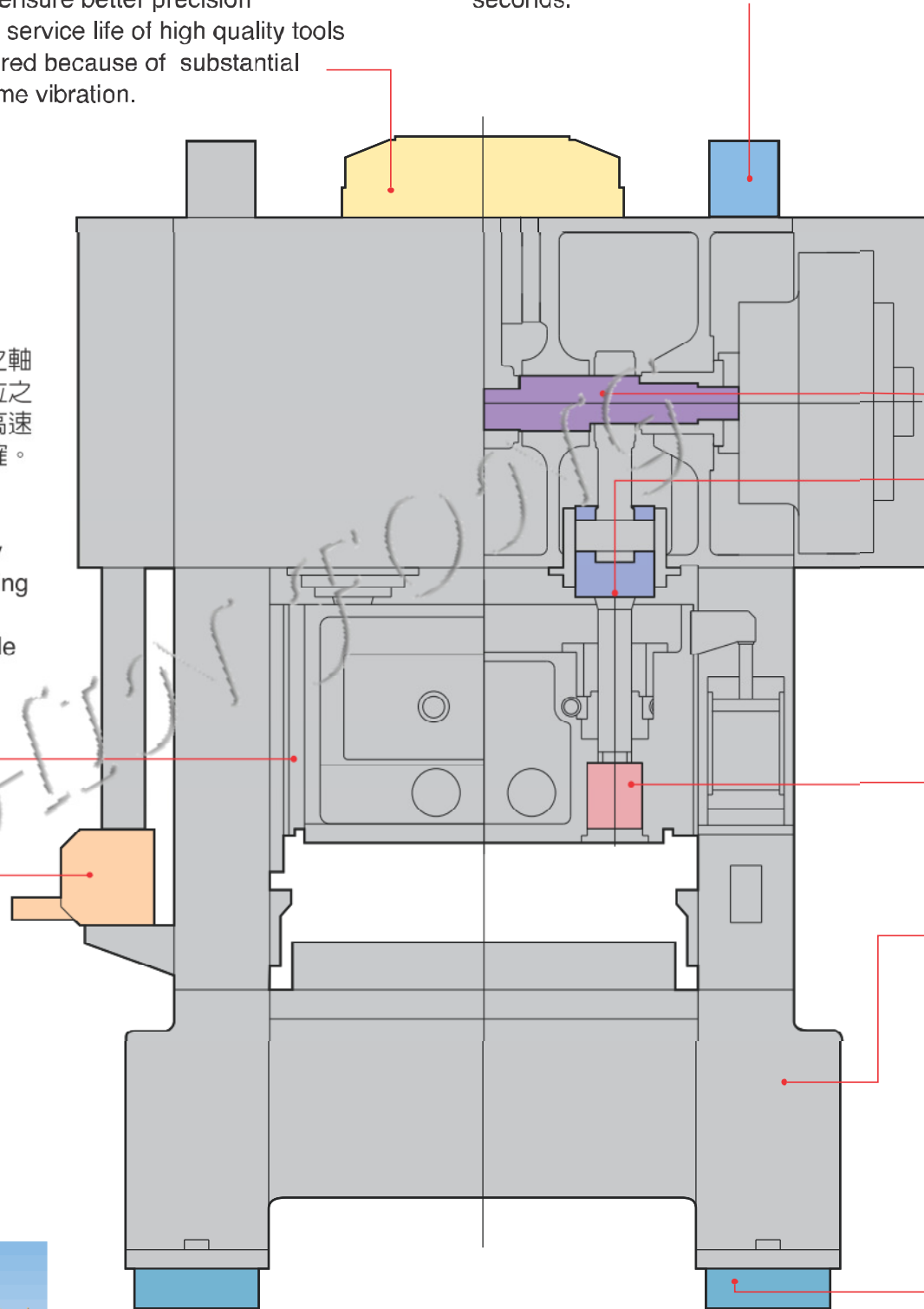
# Double Crank Presses



- 為大幅降低沖床之振動，機身內完美動力平衡之機構，能確保長期使用下沖床及模具之壽命與精度。
- A standard feature of DYNAMIC BALANCING DEVICE is employed to counterbalance eccentric thrust generated from crankshaft rotation and slide movement, This may ensure better precision lamination and longer service life of high quality tools can therefore be secured because of substantial reduction of press frame vibration.

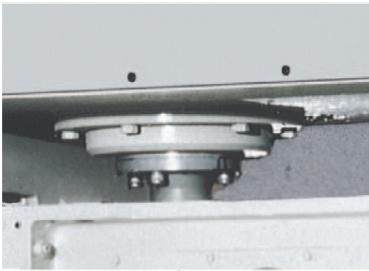
- 液壓式之卡模解脫裝置，於卡模時能迅速有效的排除，而提高沖床之稼動率。
- Hydraulic STICK RELEASE DEVICE is offered as standard system to solve the tool - jam (stick) problem within seconds.

- 機身八面耐磨擦、高硬度之軸承鋼導板，配合滑塊導路位之滾筒軸承，能確保滑塊於高速上下往復運動之平穩、精確。
- High precision eight-way bearing guides, free from backlash with permanently incorporated roller circulating elements guide the slide accurately across the whole stroke.



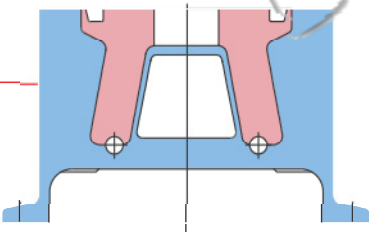
- 高精度、高速交換齒輪式送料機可提供各種不同之送距組合。
- High speed, high precision, change gear type, cam indexing roller feed is provided for a wide ranges of feed pitch.

- 精密合金鋼曲軸由四處銅襯支撐，連結兩組寬中心距連桿，極適宜大尺寸模具之沖壓，可承受較大之偏心負荷。
- A ground high quality alloy steel crankshaft has two wide con-rods closely supported by four main frame bronze bearings. The two con-rods allow the use of long tools with different operating stations and allow for off-center loading.

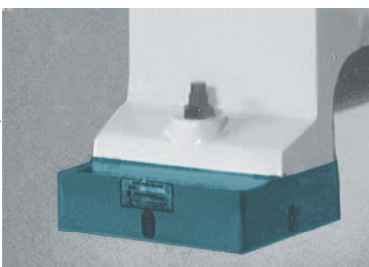


- 精心設計之導柱消除因頂座與滑塊不同熱變形所產生之導路間隙變化，並強化因曲軸旋轉產生之前後向負荷之抗力。
- The plunger guide design eliminates the change in guide clearances between the plunger and guide sleeve caused by the different expansion rates of the crown and slide in the horizontal plane. The proper connecting rod plunger clearance is maintained thus increasing resistance from front & to back loads created by the rotation of the eccentric shaft.

- 液壓式滑塊調整固鎖裝置，於高速沖壓作業時，能有高精確之下死點穩定性，使模具壽命與製品精度之訴求得以實現。
- Hydraulic SLIDE ADJUSTMENT LOCKING DEVICE is employed as standard to eliminate clearances inside the slide adjustment drive system on a regular basis to guarantee the consistency of side bottom dead center.



- 高剛性、高強度鑄造之機身並經完全之硬力消除，適合長期、高速、重負荷之精密沖壓作業。
- Fully stress-relieved cast iron frame under hydraulically pre-stressed the rod construction ensures high speed laminating precision and rigidity.



- 以特殊設計之合成材料，提供防震效率及機器安定性之最佳組合，使用壽命週期長並具有優異之防油特性。（特殊附屬品）
- A neoprene resilient cushion designed to provide the best combination of isolation effectiveness and machine stability. The cushions are designed and compounded to have a long effective life and to be resistant to oils and lubricants.(optional accessory)

## 規格 SPECIFICATIONS

規格內容 ITEM	型式 MODEL	HSD-60	HSD-80	HSD-125	HSD-200	HSD-300
能力 Capacity	ton	60	80	125	200	300
能力發生點 Rated Tonnage Point (Above B.D.C.)	mm	3.2	3.2	3.2	3.2	3.2
行程長 Stroke Length	mm	30	30	30	30	30
行程數 Strokes Per Minute	S.P.M.	200 550	200 550	200 500	150 350	100 300
最大模高 Die Height (S. D. A. U.)	mm	340	360	380	400	420
滑塊調整量 Slide Adjustment	mm	50	50	50	60	70
台盤面積 Bolster Area (LR X FB)	mm	850 X 600	1100 X 700	1300 X 800	1800 X 900	2000 X 1000
滑塊面積 Slide Area (LR X FB)	mm	790 X 450	1000 X 500	1200 X 600	1700 X 700	2000 X 900
台身盤開口 Bed Opening (LR X FB)	mm	700 X 200	900 X 200	1100 X 210	1535 X 350	1500 X 350
台身側面開口 Side Opening (LR X H)	mm	300 X 300	350 X 350	400 X 400	450 X 450	450 X 450
主電動機 Main Motor	HP	VS 20	VS 30	VS 40	VS 50	VS 60
供給氣壓 Air Pressure Required	kg/cm <sup>2</sup>	5	5	5	5	5
交換齒輪送料機 CAM INDEX FEEDER (CHANGE GEAR TYPE)						
型式 MODEL		FGC-150S	FGC-200S	FGC-300S	FGC-400S	
材料寬度 Width of Material	mm	150	200	300	400	
材料厚度 Thickness of Material	mm		0.1~1.6			
送料線高度 Feed Line Height	mm		60~120			
送料長度 Feed Length	mm		6.5 ~ 183			
主軸分割數 Cam Index Number			4			
S型雙頭料架附矯直機 S-LOOP UNCOILER/LEVELLER						
型式 MODEL		SUL-200A	SUL-300A	SUL-400A		
材料寬度 Width of Material	mm	200	300	400		
材料厚度 Thickness of Material	mm	0.3~0.6	0.3~0.6	0.3~0.6		
材料外徑 Outer Diameter of Coil	mm	1200	1200	1200		
材料內徑 Inner Diameter of Coil	mm	508 ± 20	508 ± 20	508 ± 20		
材料重量 Weight of Coil	kg	1000 X 2	1500 X 2	1500 X 2		
送料線速度 Feed Speed	m/min	3~60	3~60	3~60		
料卷擴張方式 Coil Expansion		油壓式 HYDRAULICALLY OPERATED				

### 標準附屬品：

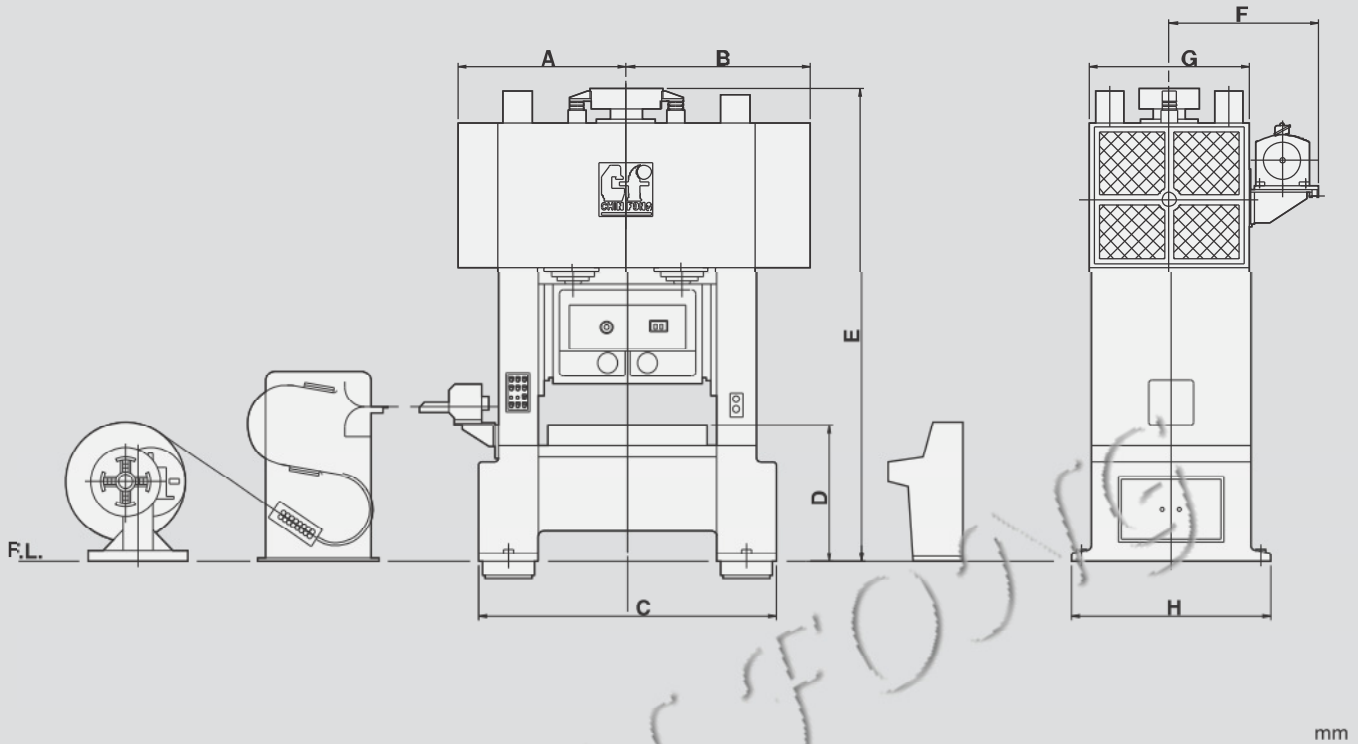
1. 動力平衡裝置
2. 3位數電子式預調計數器
3. 6位數電子式累積計數器
4. 小時計數器
5. 電子式順序控制器
6. 材料潤滑裝置
7. 液壓式滑塊固鎖裝置
8. 氣動式滑塊調整裝置(附氣動扳手/300噸為電動)
9. 1/100mm刻度模高指示計
10. 主馬達正逆轉裝置
11. 誤送檢知插座(二個)
12. 三相交流V.S.馬達附控制箱
13. 自動強制給油潤滑系統附動力幫浦
14. 冷卻油機
15. 空氣源接頭

### STANDARD ACCESSORIES

1. Dynamic balancing device
2. 3 digits electronic type preset counter
3. 6 digits electronic type total counter
4. Hour counter
5. Electronic rotary sequencer
6. Material lubrication device
7. Hydraulic slide adjustment locking device
8. Air-driven slide adjustment device with air wrench / HSD-300 by electric motor
9. 1/100 mm die height indicator
10. Main motor reversing device
11. Misfeed detector receptacle
12. 3-phase AC VS motor with speed controller
13. Automatically forced recirculating lubrication system with power unit.
14. Oil Cooler
15. Air source receptacle

外觀尺寸

OUTLINE DIMENSION



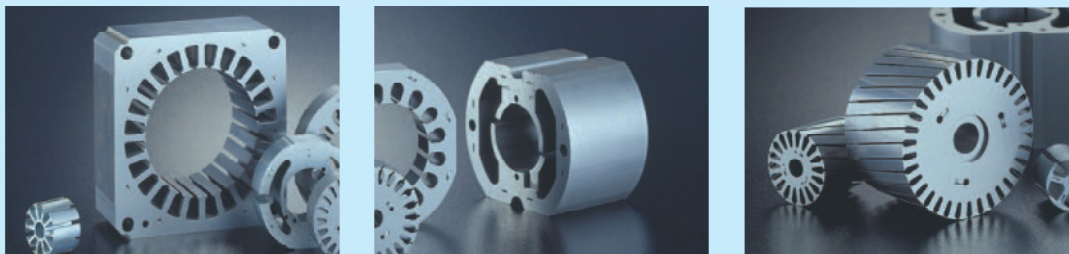
mm

	A	B	C	D	E	F	G	H
<b>HSD-60</b>	1030	1150	1830	900	3050	1350	1000	1250
<b>HSD-80</b>	1180	1400	2140	950	3350	1350	1100	1350
<b>HSD-125</b>	1280	1530	2390	1012	3800	1400	1200	1500
<b>HSD-200</b>	2100	2050	3190	1370	4900	1550	1600	2000
<b>HSD-300</b>	2975	2075	3250	1550	5700	1620	2000	2500

特殊附屬品：

OPTIONAL ACCESSORIES

- |                            |   |
|----------------------------|---|
| 1. 防震裝置                    | 1. Anti-vibration device                                |
| 2. 舉模器                     | 2. Die lifter   |
| 3. 夾模器                     | 3. Die clumper  |
| 4. 移模臂                     | 4. Die arm  |
| 5. 飛輪剎車裝置                  | 5. Flywheel brake                                       |
| 6. 直流變速馬達及控制箱              | 6. DC motor with speed controller                       |
| 7. 隔音罩                     | 7. Sound-proof room                                     |
| 8. 雙頭料架(附油壓式料卷擴張裝置)        | 8. Double head uncoiler with hydraulic expansion device |
| 9. 矯直機附S-loop              | 9. Straightener with S-loop                             |
| 10. 交換齒輪式凸輪分割型送料機(附交換齒輪四個) | 10. Change-gear type. cam index roll feed               |
| 11. 噴風裝置                   | 11. Air ejector   |



沖壓機械專業製造廠

創新、服務、回饋

**金豐機器工業股份有限公司**  
**CHIN FONG MACHINE INDUSTRIAL CO., LTD.**

**HEAD OFFICE & FACTORY:**

總公司：台灣省彰化市彰水路186號  
 186 Chang Shui Road, Chang Hua, Taiwan  
<http://www.chinfong.com.tw>  
 E-mail: sales@chinfong.com.tw  
 TEL: +886-4-752-4131  
 FAX: +886-4-761-1920, 761-2814

**北區營業所 TAIPEI OFFICE**

TEL: +886-3-435-5058  
 FAX: +886-3-463-9648

**南區營業所 KAOHSIUNG OFFICE**

TEL: +886-7-238-5689~90  
 FAX: +886-7-238-5691

**金豐(中國)機械工業有限公司**  
**CHIN FONG (CHINA) MACHINE INDUSTRIAL CO., LTD.**

寧波市鎮海經濟開發區金豐路3號  
 3 Chin Fong Road, Zhenhai Economic Development Zone, Ningbo, China  
 TEL: +86-574-8630-1222  
 FAX: +86-574-8630-3709  
<http://www.chinfong.com.cn>

**STAMTEC®**

**U.S.A.: STAMTEC INC.**

4160 Hillsboro Highway Manchester, TN 37355, U.S.A.  
 TEL: +1-931-393-5050  
 FAX: +1-931-393-5060  
<http://www.stamtec.com>

**OVERSEAS BRANCHES**

**THAILAND: CHIN FONG (THAILAND) CO., LTD.**

TEL: +66-2-919-6820~2 FAX: +66-2-919-6823

**INDONESIA: PT. CHIN FONG INDONESIA**

TEL: +62-21-450-7422 FAX: +62-21-458-44197

**MALAYSIA: CHIN FONG MACHINE (M) SDN BHD**

TEL: +60-3-3290-6827~9 FAX: +60-3-3290-6830



The contents disclosed in this catalogue, including pictures, data, wordings & drawings, are exclusive property of Chin Fong Machine Industrial Co., Ltd. Unauthorized duplication or use part or whole of this catalogue is prohibited. Chin Fong reserves rights to modify the specifications & features, due to product improvements, without further notification. optional accessories showing on this picture are for reference only.

\*以上資料及圖片均屬本公司之產權，不得抄襲打冒。日本公司得大產品之改良運行設計變更，不另通知。照片內之實物屬選用配備，僅供參考。